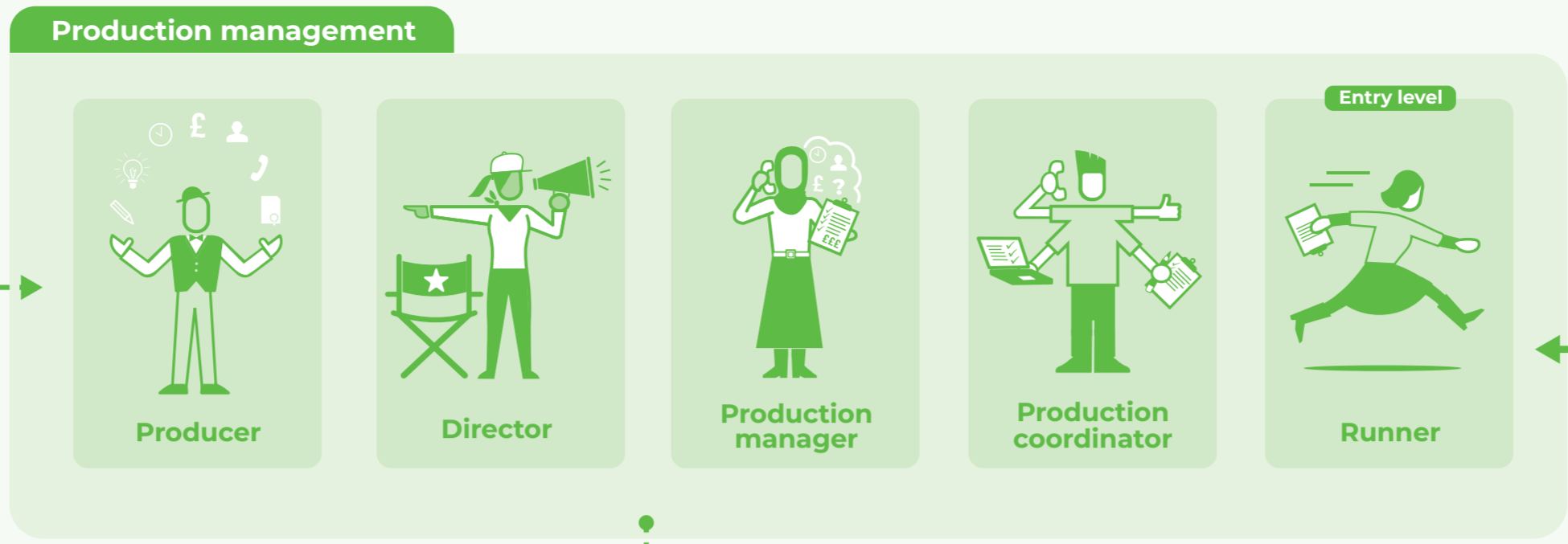


The green stamps show the routes in. Remember, you can move from one department to another.

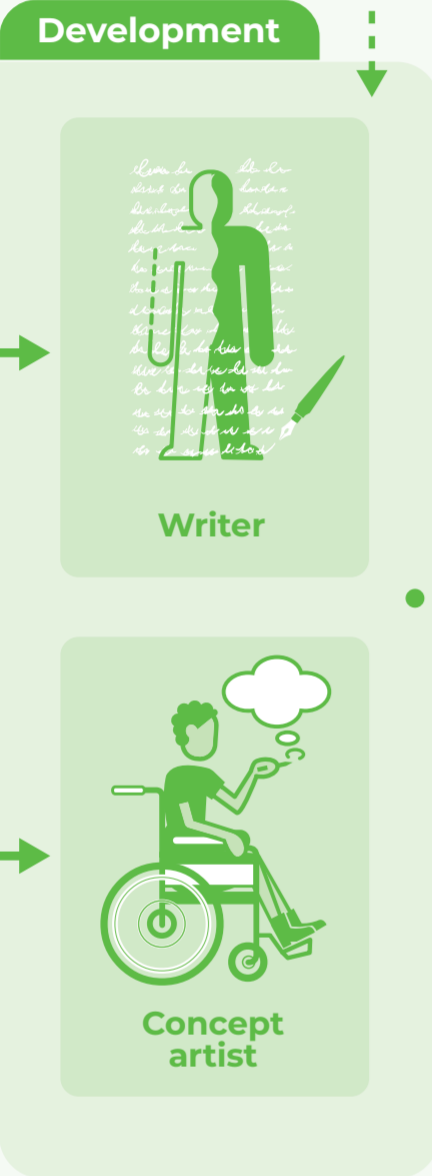
Follow the arrows to learn how an animation is made.



Entry level

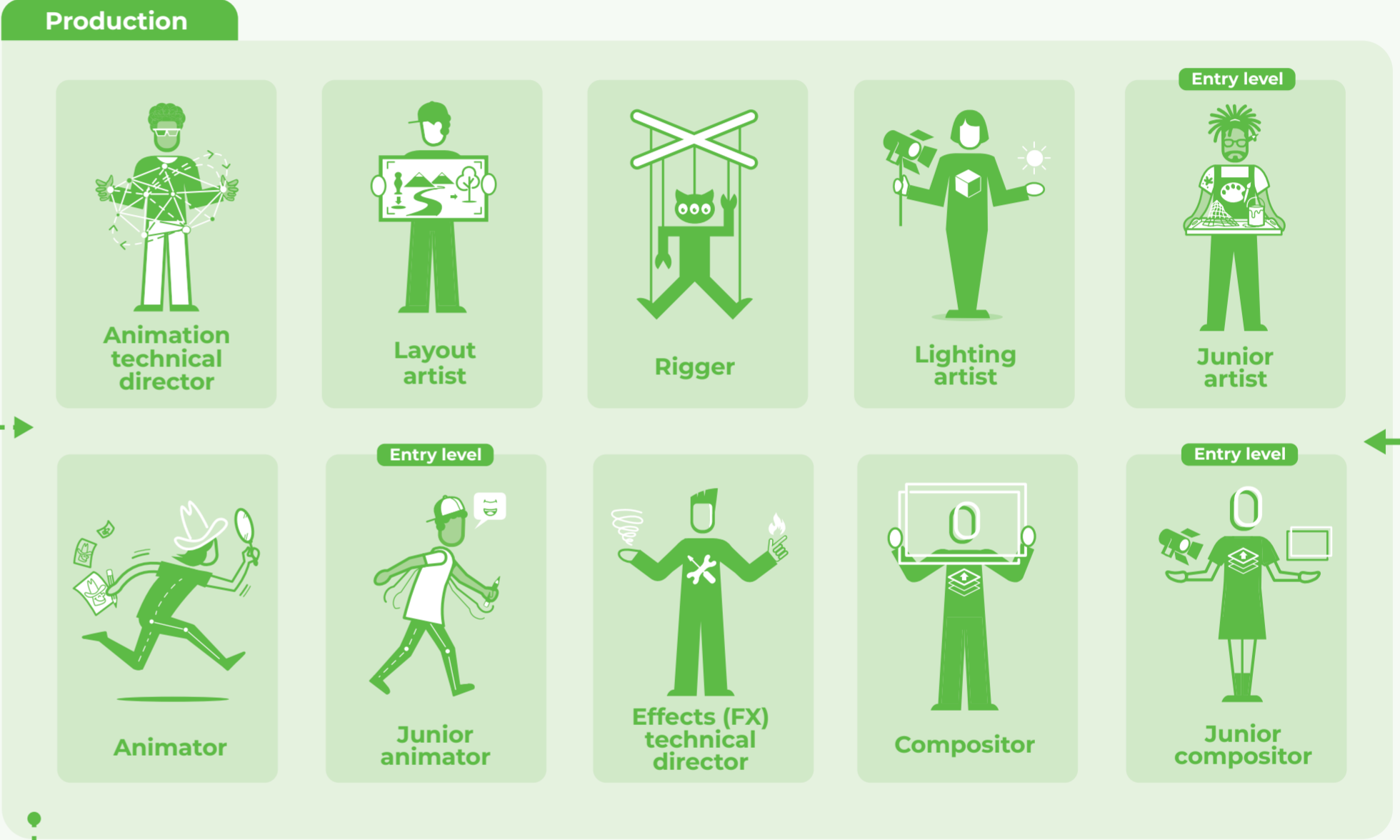
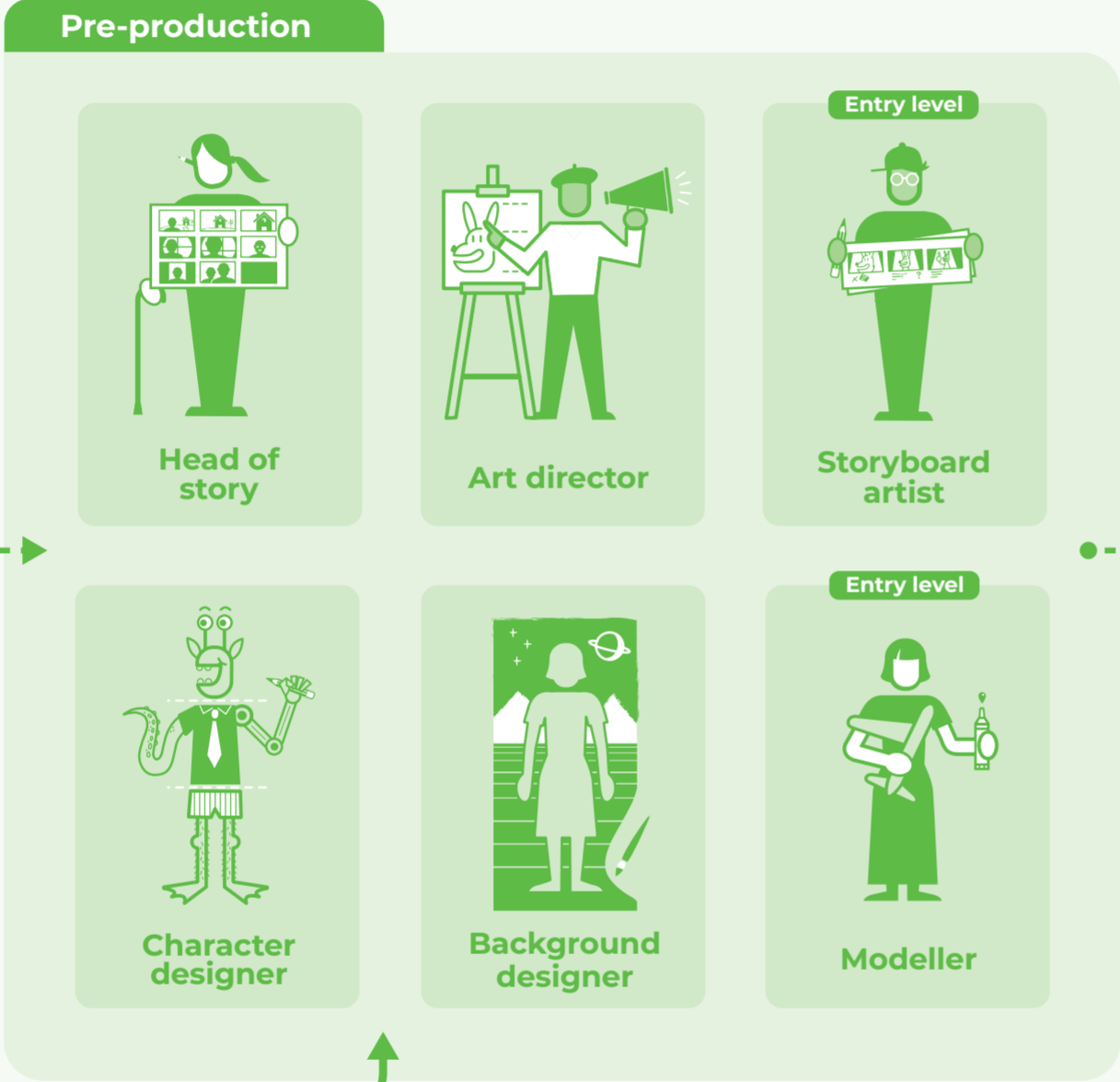
Entry level roles are ones that you can do straight after education, whether that be school, college or university. Most entry level roles are in production. Some companies look for new entrants in all the production roles listed.

Multiple entry routes

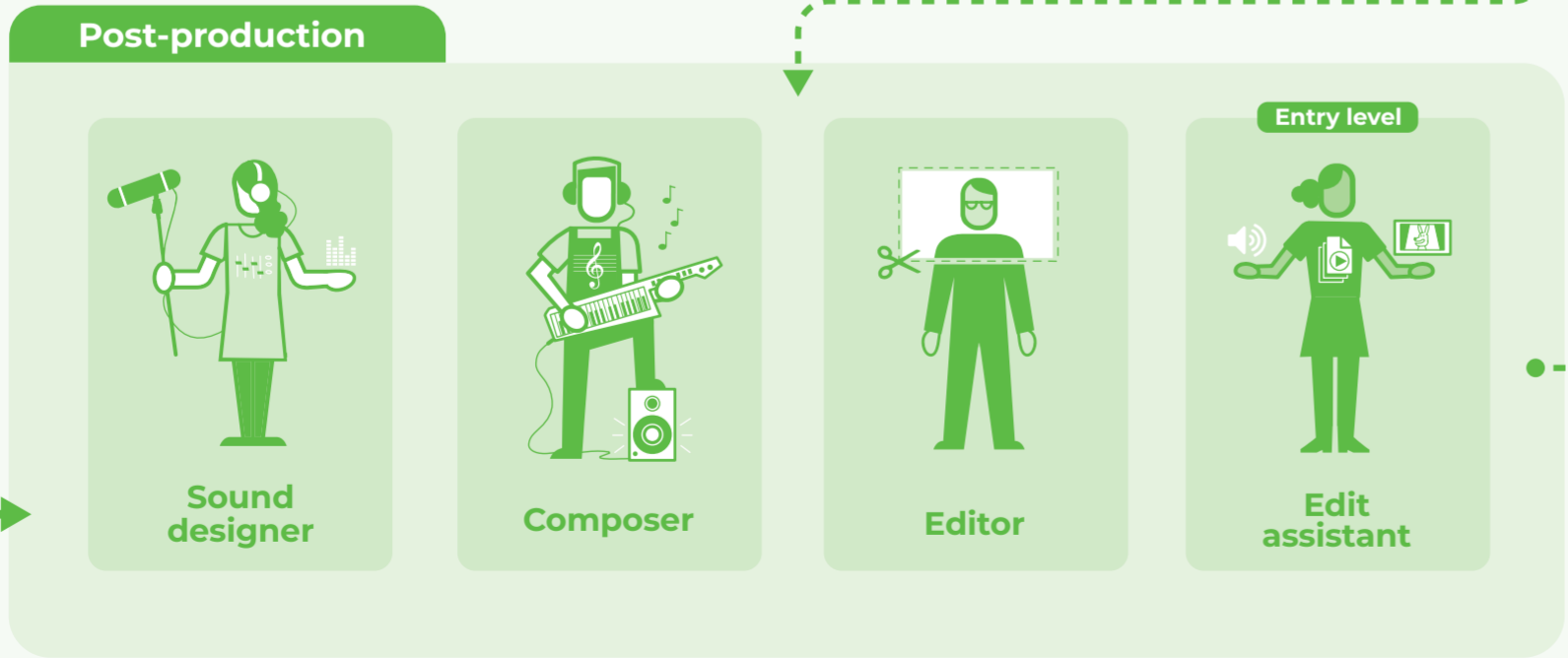


Film or literature route

Art, film, graphic design route

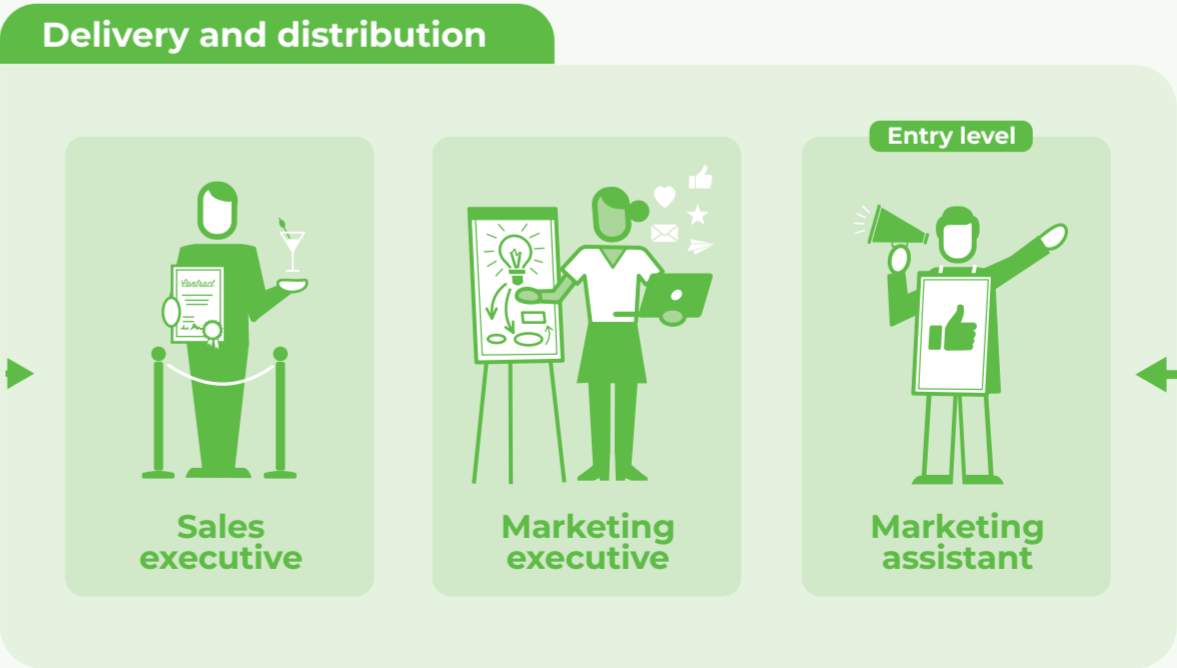


Animation, art, graphic art routes



Art, graphic art, film routes

Music, audio, art routes



Multiple entry routes

Animation industry career map

Go to ScreenSkills for more details:
screenskills.com/job-profiles/browse/animation



