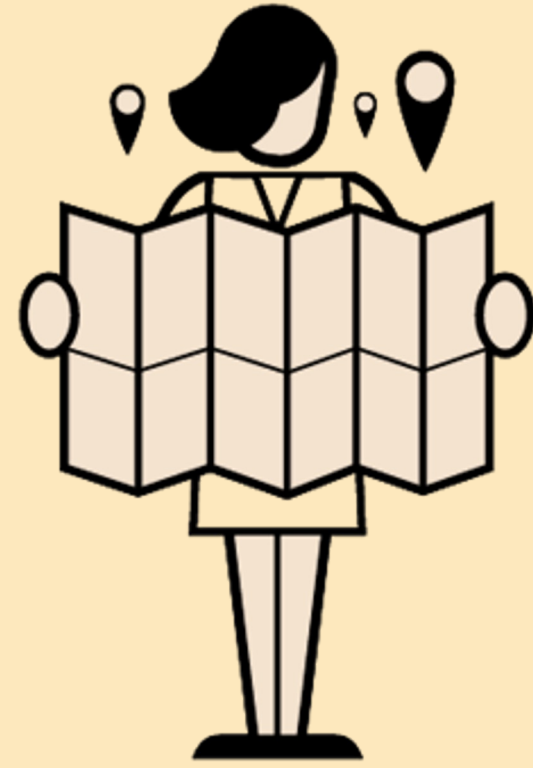


Locations manager



AI overview

AI is beginning to transform the role of locations managers by improving efficiency and supporting creative decision-making. AI-powered tools could assist in scouting, assessing locations, and predicting costs, speeding up the decision-making process. With AI, locations managers can evaluate weather, traffic, and environmental conditions, enhancing safety and planning. Additionally, AI could automate risk assessments, optimise resource allocation, and improve logistics, allowing locations managers to focus on creative problem-solving.

To prepare for the future, locations managers could gain proficiency with AI tools, including those for scouting, environmental analysis, and budget management. Developing skills to manage AI-generated insights and using local AI models for privacy could be key in adapting to these changes.

How can I prepare for the future?

As technologies develop, keeping up-to-date with the latest opportunities is important.

These are some of the areas that locations managers may need to understand in the future.

Future Tech	Description	Learning resources
AI-Driven Location Scouting	AI tools that analyse aesthetic, logistical, and budgetary requirements to suggest locations that align with project goals.	Check out ScreenSkills Training, events and opportunities page for up to date courses; additional learning on LinkedIn Learning for AI scouting techniques.
Self-Hosted AI Models for Privacy	AI systems that run locally to help managers process data without sharing sensitive information externally.	GitHub tutorials on self-hosting AI; YouTube guides on setting up local AI models for privacy protection.
Environmental and Safety Analysis	AI tools that assess weather, environmental risks, and noise levels to ensure each location is safe and meets legal standards.	Check out ScreenSkills Training, events and opportunities page for up to date courses about production compliance; LinkedIn Learning offers tutorials on AI for environmental and risk analysis.
Traffic and Accessibility Planning	AI-driven tools that monitor real-time traffic and parking availability, helping managers plan crew and equipment movement.	Check out ScreenSkills Training, events and opportunities page for up to date courses on production logistics; online resources from Coursera on AI in logistics.
Cost and Impact Assessment	AI systems that evaluate costs and the environmental impact of locations, helping managers manage budgets and sustainability.	Check out ScreenSkills Training, events and opportunities page for up to date workshops on sustainable production; learning resources on Skillshare for AI cost analysis.

What AI tools can I use right now? – Efficiency & workflow opportunities

Pre-production

Location identification and matching: AI can analyse project requirements and suggest locations that align with the creative vision, budget, and accessibility.

Self-hosted AI models: AI tools can be run locally, providing privacy and security while processing sensitive data, allowing managers to work confidentially.

Location suitability & assessment: AI can evaluate structural factors of a location, providing quick assessments of a location's viability without the need for expensive, time-consuming analysis.

Production

Environmental and safety analysis: AI-driven tools could evaluate on-site conditions, including weather, noise, and other risks, helping to ensure locations meet safety standards.

Traffic and accessibility monitoring: AI can assess traffic patterns and parking availability, improving logistics planning for crew and equipment.

Real-time data utilisation: AI could provide real-time data about equipment, weather, and location conditions, helping locations managers make informed decisions on set.

Post production

Cost analysis and budget predictions: AI can evaluate historical location costs and track real-time expenses, providing budget insights and helping managers control costs.

Impact assessment reports: AI tools can generate reports on the environmental and social impact of filming at certain locations, supporting sustainable practices.

Location data review: AI could help manage and analyse location data, creating a comprehensive overview of location conditions for future reference.